

Date:

Client:

Project:

VOLA product: Combi-32



**Combi-32**

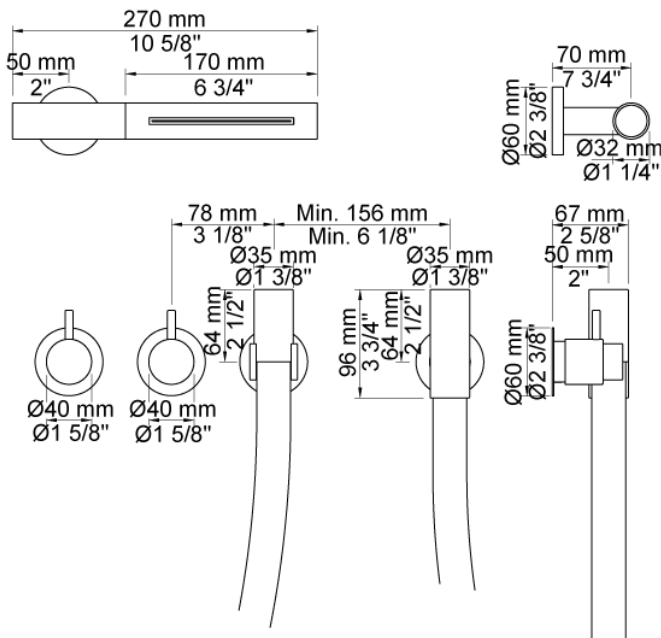
Water fall shower, kneipp hose and build-in stop valve. Combi-32UP = Single valve 2800V, 200M. Combi-32AP = 2 pcs. handles NR17, kneipp hose 070W, Water fall shower 080W, 4 pcs. 60 mm circular flanges 001. Requires a minimum of 20 l/min.

**Flow**

	Bar:	1.0	2.0	3.0	4.0	5.0
070W	(l/min)	23.1	32.7	40.0	46.2	51.6
080W	(l/min)	23.1	32.7	40.0	46.2	51.6

**Available in colors**

- Color 02, Grey
- Color 04, Light blue
- Color 05, Orange
- Color 06, Light green
- Color 08, Yellow
- Color 09, Dark grey
- Color 12, Mocca
- Color 14, Bright red
- Color 15, Dark blue
- Color 16, Polished chrome
- Color 17, Gloss black
- Color 18, White
- Color 19, Natural brass
- Color 20, Brushed chrome
- Color 21, Carmine red
- Color 25, Pink
- Color 27, Matt black
- Color 40, Brushed stainless steel



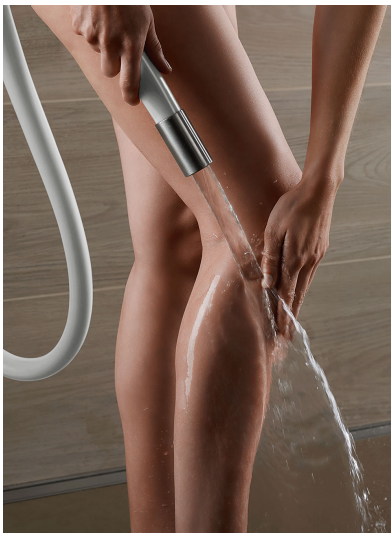
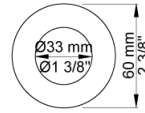
Date:

Client:

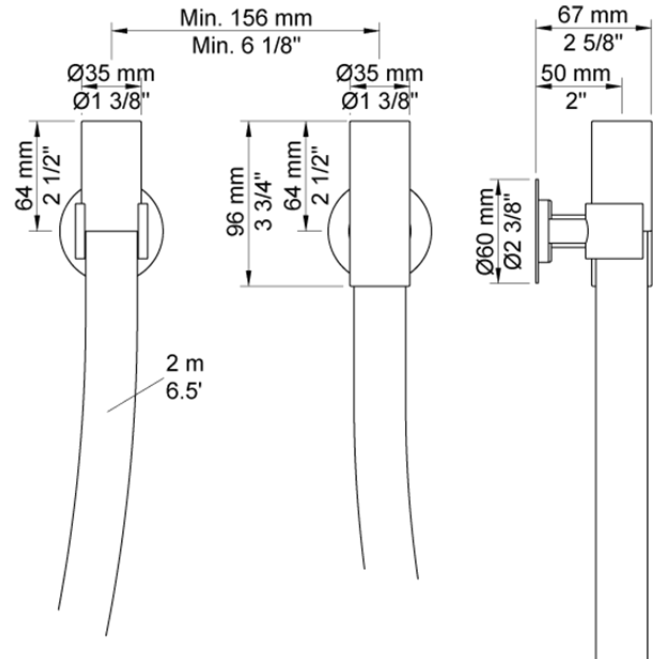
Project:



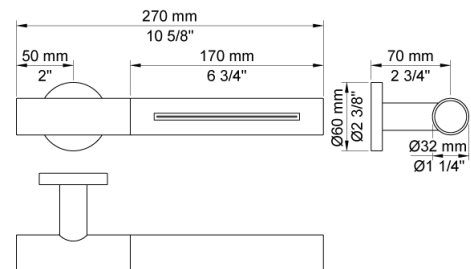
**001**  
60 mm circular flange. Hole Ø33 mm.



**070W**  
Kneipp hose. Requires a minimum of 20 l/min.



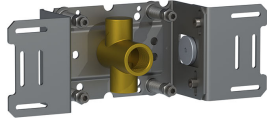
**080W**  
Water fall shower. Requires a minimum of 14 l/min.



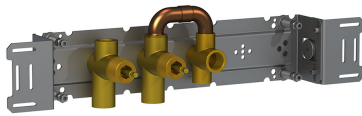
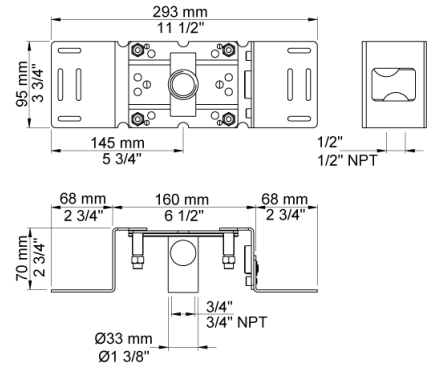
Date:

Client:

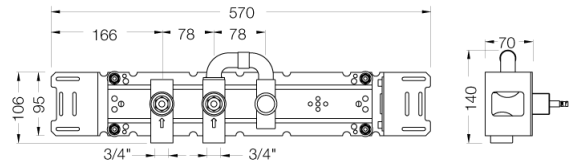
Project:



**200M**  
Separate outlet socket. 1/2" connection to copper, steel, iron or pex pipe work.



**2800V**  
Stop valve and single valve with fixed outlet.



**NR17**  
Operating handle for 600, 700, 800, 900, 1500, 2800, 2900, S20, S21, S40, S42 incl. variants. Ø40 mm.

